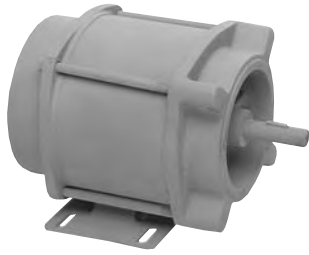


ACCESSORIES

Rewind Motors



9915.0014

Base mount E.P. Electric Motor



Face mount E.P. Electric Motor

9915.0003



Face mount Non-E.P. DC Motor
(Shown with optional mounting plate part no. 9923.0008)

Electric Motors are reversible type for AC or DC operation. **Circuit breaker must be used with all DC electric motors.**

Hydraulic Motors are reversible type. No other hydraulic components are furnished with the reel. A 4-way, three position control valve with motor spool is recommended but is **not** supplied.



9918.2600

Compressed Air Motors are supplied with a fingertip control valve with integral backpressure relief, and with flexible air line from control valve to rewind motor. We recommend using a lubricator and filter with air rewind motors, not supplied.



Note: All accessories for the above motors are available, but must be ordered separately.

Note: Standard motor voltages available. 12v and 24v DC, 115v AC, 230v AC single phase and 3-phase motors available on special order.

These assemblies are used to change the pinion shaft position on gear-drive crank rewind reels to meet space restrictions or for greater operator convenience. Units can be factory-installed, when specified with reel order, or supplied in kit form for field installation.

Assemblies are complete with drag-brake assembly, pinion, gear guard, brake handle and fasteners. Fits standard mounting holes on reel frame.

To Order: Specify Rewind Position for parts order or factory installation.



Horizontal rewind unit



30° rewind unit



Vertical rewind unit